

**FOLGER THEATRE  
SOCIAL NARRATIVE**

**FOLGER  
THEATRE**



**FOLGER SHAKESPEARE LIBRARY**

*Bee Two Sweet Photography*



Bee Two Sweet Photography

**We look forward to your visit at Folger Theatre.** Theatre is a fun way to experience a story live and in person. At a live performance, actors move around on a stage and act out a story by pretending to be someone else. Sometimes actors might come close to you or make loud noises. In these pages you will find things you will see at Folger to help guide you through your theatre experience.



Bee Two Sweet Photography

## WHAT HAPPENS ON STAGE

During a live production, actors will perform a script that they have rehearsed and move on the stage through blocking the actions that happen on stage. Some of the action can be joyful and some can be sad. There can also be yelling and fighting. Remember that the action you are seeing on stage is not real. Some actors may look or pretend to be hurt, sad, or angry, but they are okay.



Lloyd Wolf

## **BEGINNING YOUR EXPERIENCE**

When you arrive at the Folger you will use the East Entrance to enter the building. The East Entrance is located on the corner of East Capitol and 3rd St SE. Walk down the ramp and you will arrive at the entry doors. Proceed inside and you will find the Welcome Desk located to your right.



Erika Nizborski

## PICKING UP YOUR TICKETS

You are now in the lobby, which is an open space where the audience checks into the theatre and exhibition galleries. The lobby may be loud and sometimes crowded. If you need to pick up your tickets, you will go to the Box office at desk located to the right of the entry doors. Wait in line until you are called to the desk and then you will provide your last name to receive your ticket. We also offer a coat check if you'd like to hang up your coat or use a locker.



## **SENSORY KITS AND WELLNESS ROOM**

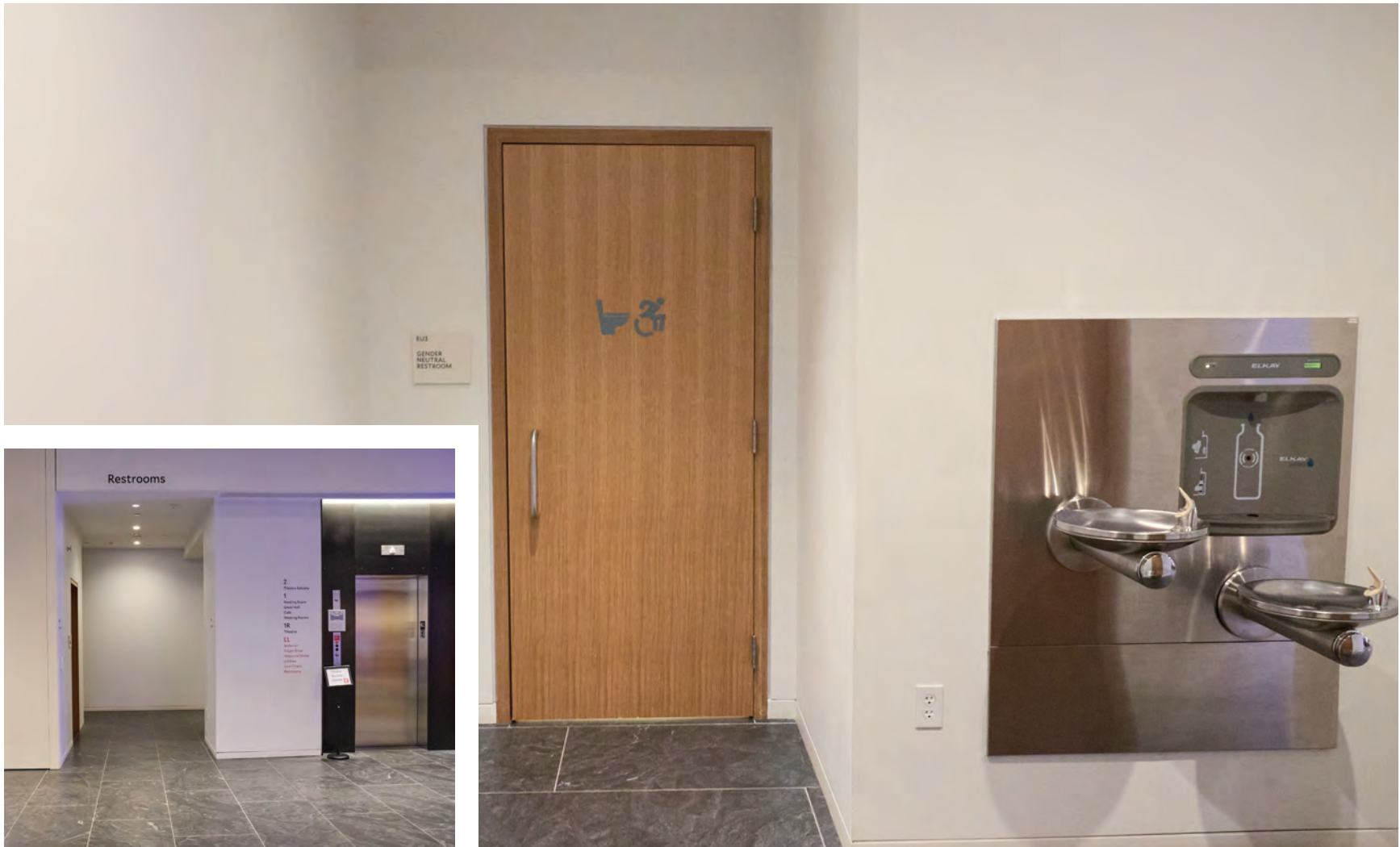
Sensory Bags available at the front desks or the theatre. They contain fidgets and other tools to help during your time here. Please return them before you leave the Folger. You can also ask for a self-guided tour to help know the building and spaces better. If you need to take a break at any time, a staff member can direct you to our Wellness Room.



Erika Nizborski

## SEEING OUR GALLERIES

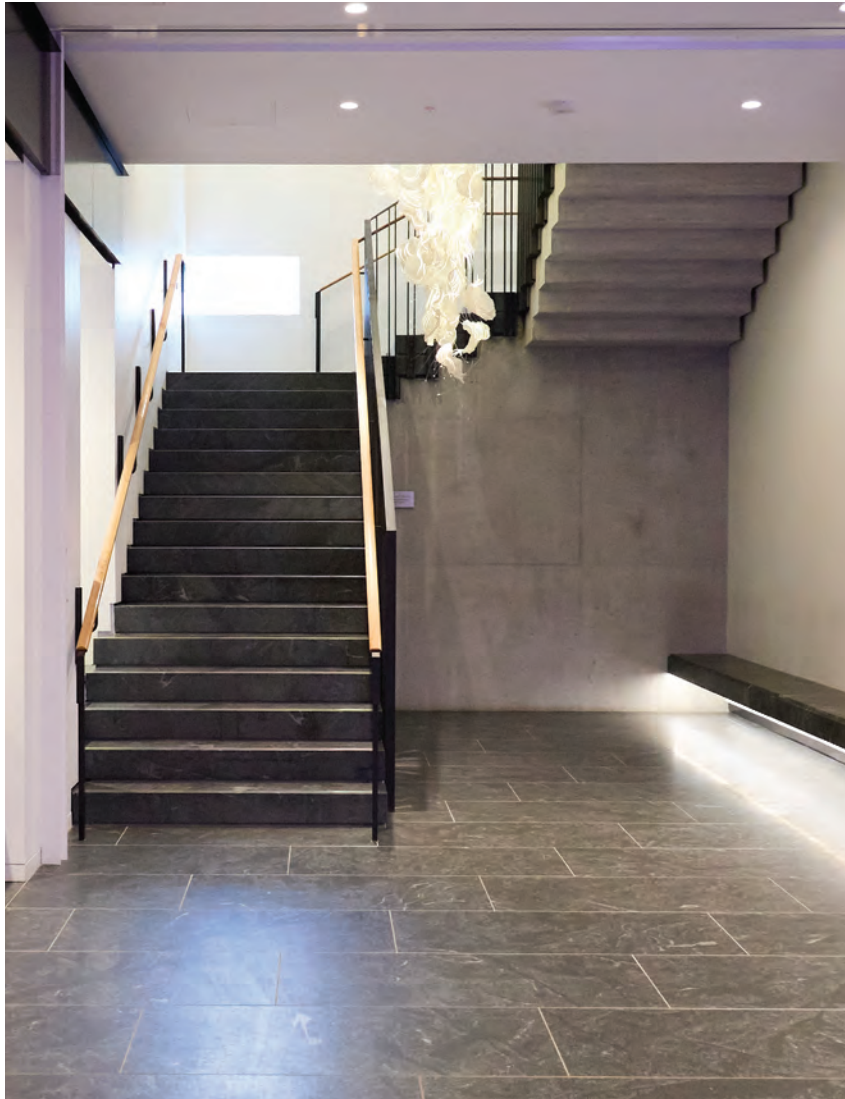
Our Exhibition Galleries are available for you to explore before the performance begins. There is plenty to see about Shakespeare, the play, and more!



Peggy Ryan

## FINDING OUR RESTROOMS

Our restrooms are located in the East Lobby. All restrooms are gender neutral, which means anyone can use them. There is also one single-stall family restroom in the East Lobby and three single-stall restrooms located outside of the theatre. If you need help locating them, a staff member will be happy to point them out.



Peggy Ryan

## GETTING TO OUR THEATRE

Once you are finished exploring the galleries, you'll go upstairs to access the Theatre and Great Hall. You can take the stairs up one level or use the elevator. Folger Staff will be available to assist you along the way.



DOLA Photo

## **GREAT HALL AND CAFÉ**

If you are hungry or thirsty, you can purchase concessions from our café Quill & Crumb in the Great Hall. Drinks covered with a lid are allowed in the theatre, but food is not. There are plenty of tables available for you to sit and finish your snack before entering the theatre.

The Great Hall can also become loud and crowded, and you will hear announcements and see gentle light flashes when it is time to enter the theatre.



Peggy Ryan, Inset: Lloyd Wolf

## THE THEATRE

When it is time to go into the theatre a staff member will scan your ticket and help direct you to your seat in the orchestra or balcony. It may be dark and loud when taking your seat and other audience members will be moving around the space.



Bee Two Sweet Photography

## THE PERFORMANCE

When it is time for the show to start, you will hear an announcement, and it will get dark in the theatre. If you need to stand up or leave at any point during the performance, a member of the Folger staff can assist you.



Peggy Ryan

## INTERMISSION

For longer performances, halfway through the show, there will be a 15-minute intermission. This is a great time to stand up, step outside, use the restroom, and get a drink or snack. You will hear an announcement and see gentle light flashes when it is time to return to the theatre. If you are not sure if your performance has an intermission, you can ask at the box office when you check in.



Erika Nizborski

## SHOW END

At the end of the performance, actors will come out on stage for bows. The audience will clap, and some will stand and shout their excitement—if you enjoyed the show, feel free to join in! Everyone will start to exit the theatre. It will get crowded as everyone exits. If you need to stay in your seat until it is less crowded, feel free to do so.

We hope you have enjoyed your experience at the Folger. If you have any questions or have feedback you'd like to share, please contact us at [visitorservices@folger.edu](mailto:visitorservices@folger.edu). We look forward to seeing you again soon!